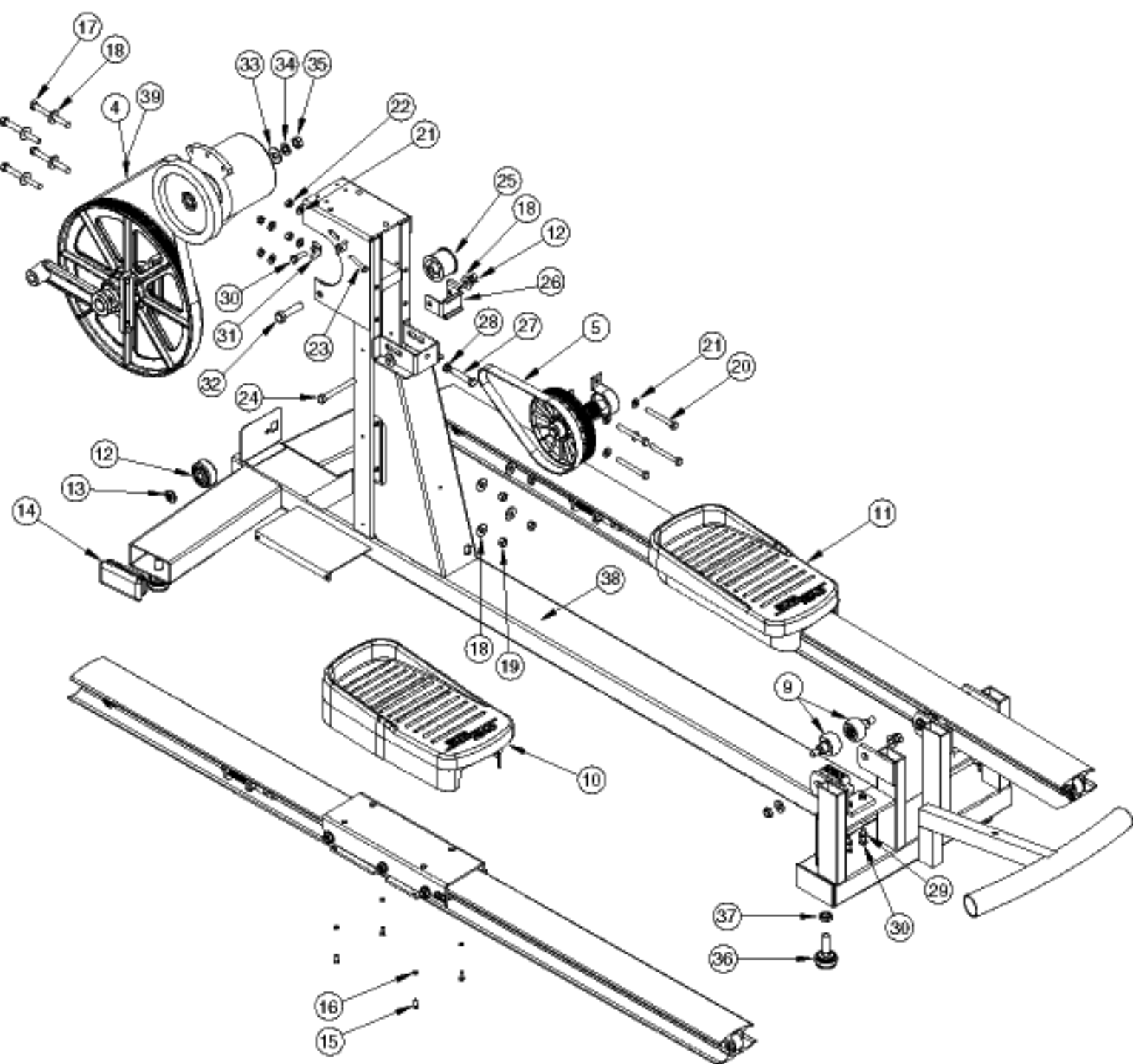


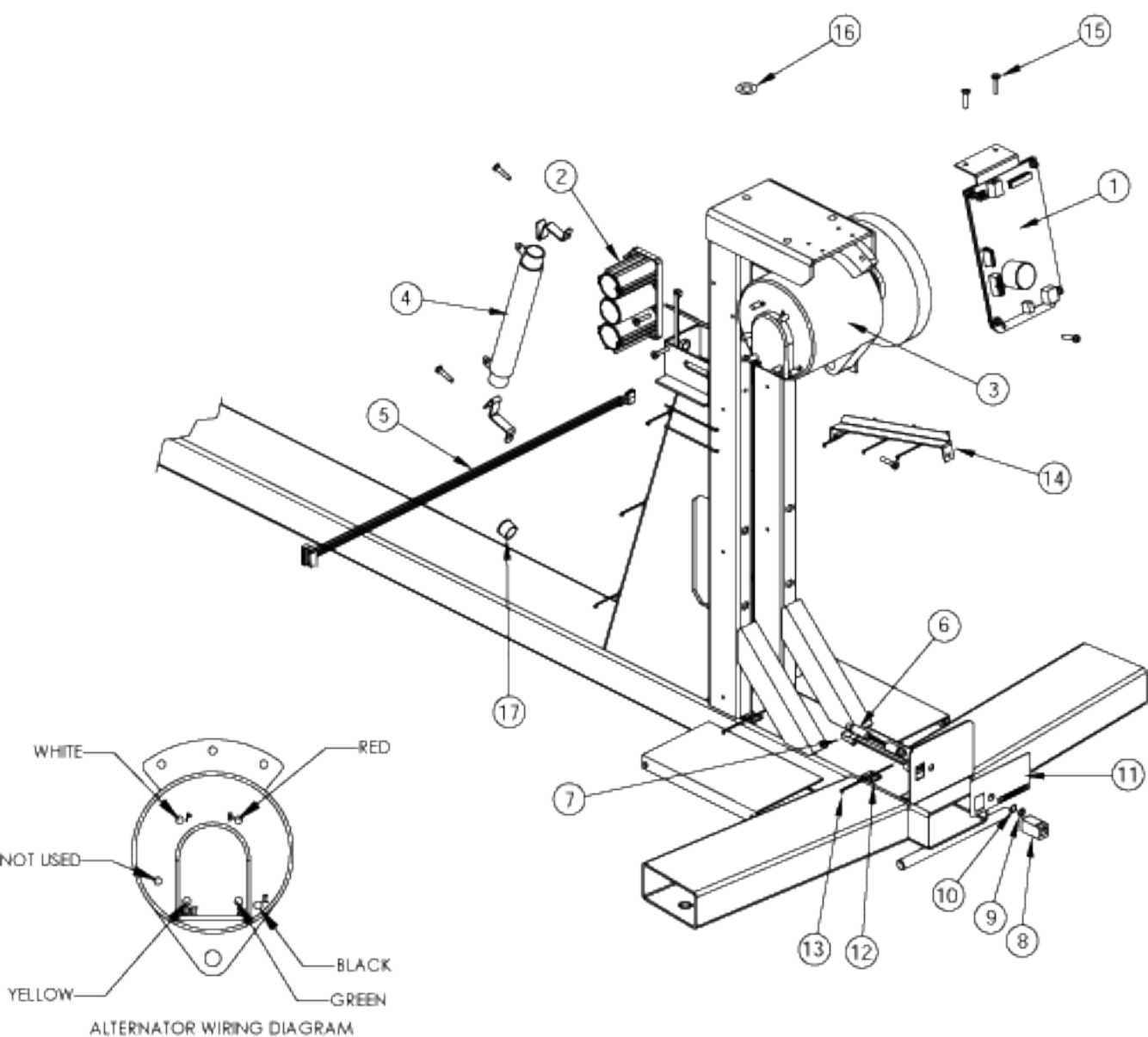
Natural Runner Series

Frame Assy



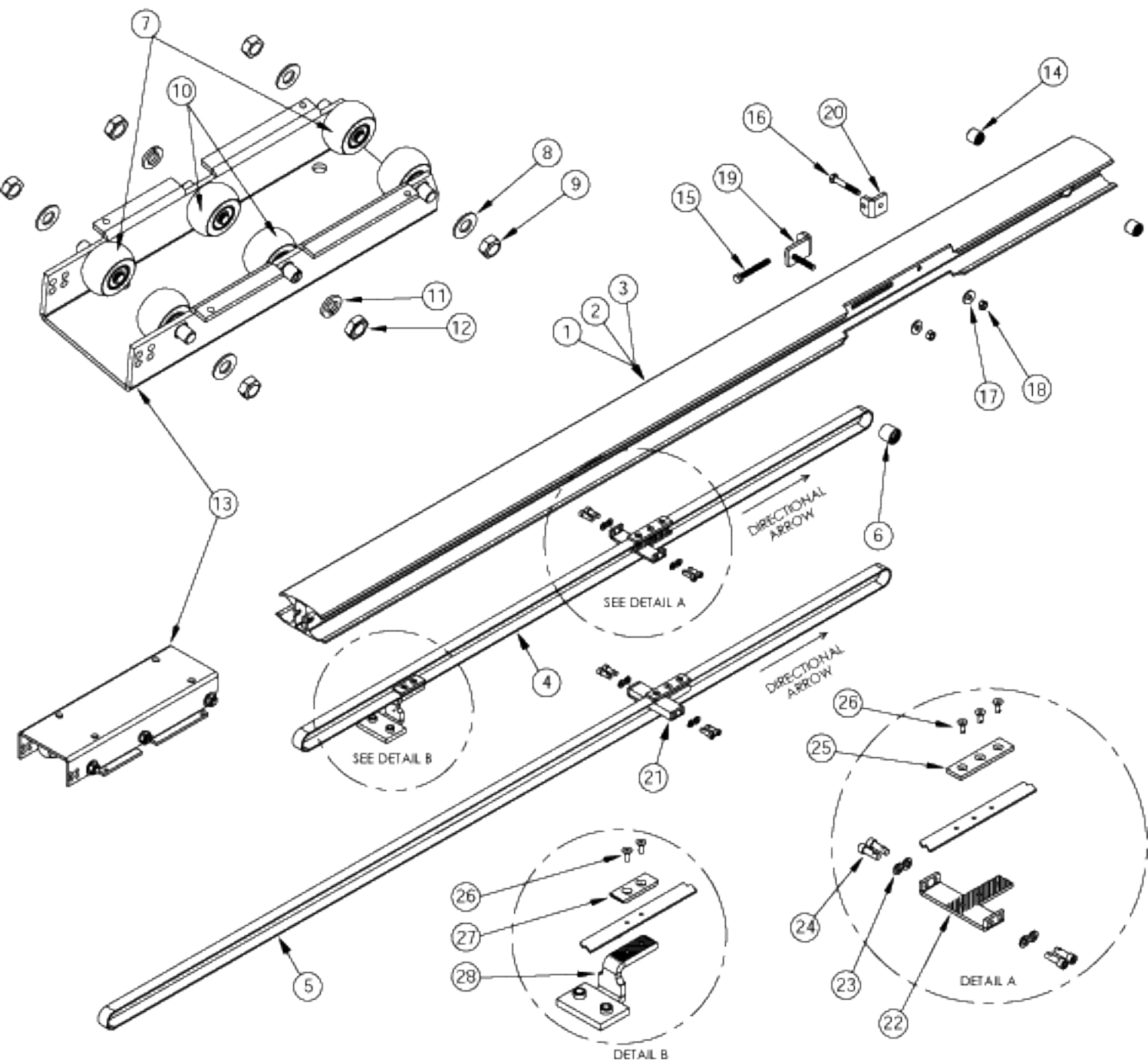
Natural Runner Series

Electrical Assy



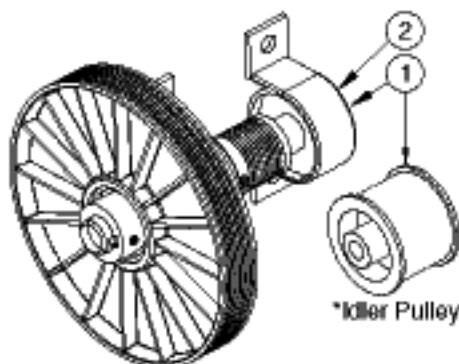
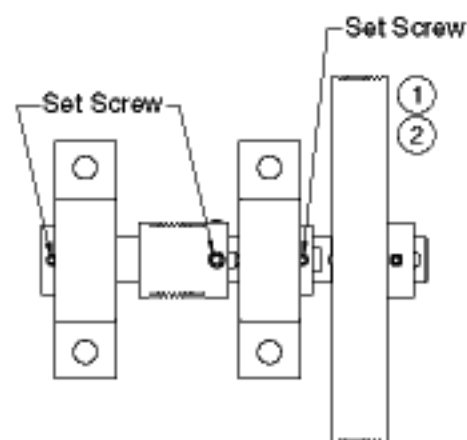
Natural Runner Series

Rail & Shuttle Assy





Natural Runner Series Drive Assy's

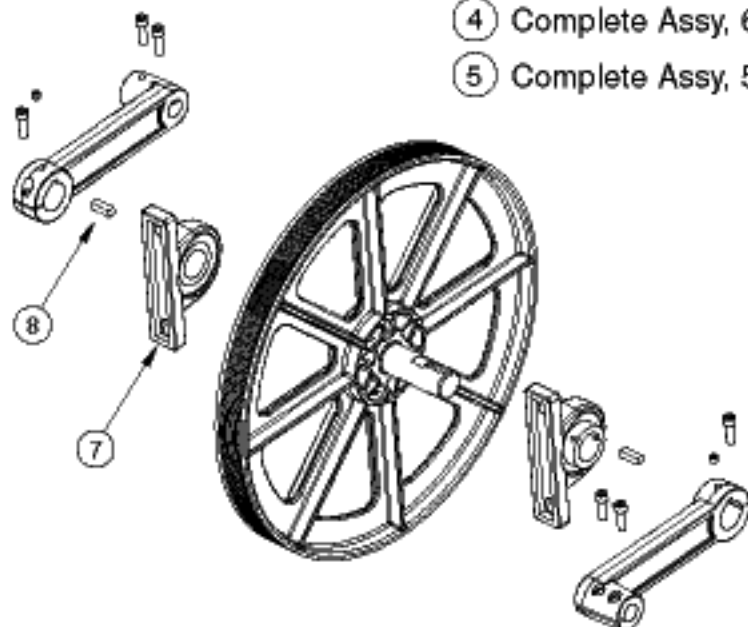
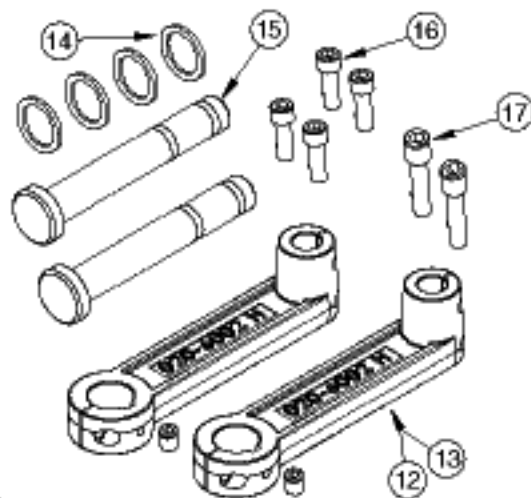


Transmission

- ① Complete Assy
800-3863
up to sn E2099152
and sn PE2092208
- ② Complete Assy
721-0104
sn E2109153 and up
and sn PE2102209 and up
*Includes Pulley Shown

Natural Runner Crank & Shaft Kit

- ⑩ 6" Crank Arm Kit, EE/NR
- ⑪ 5" Crank Arm Kit, NR+ w/Upper Body

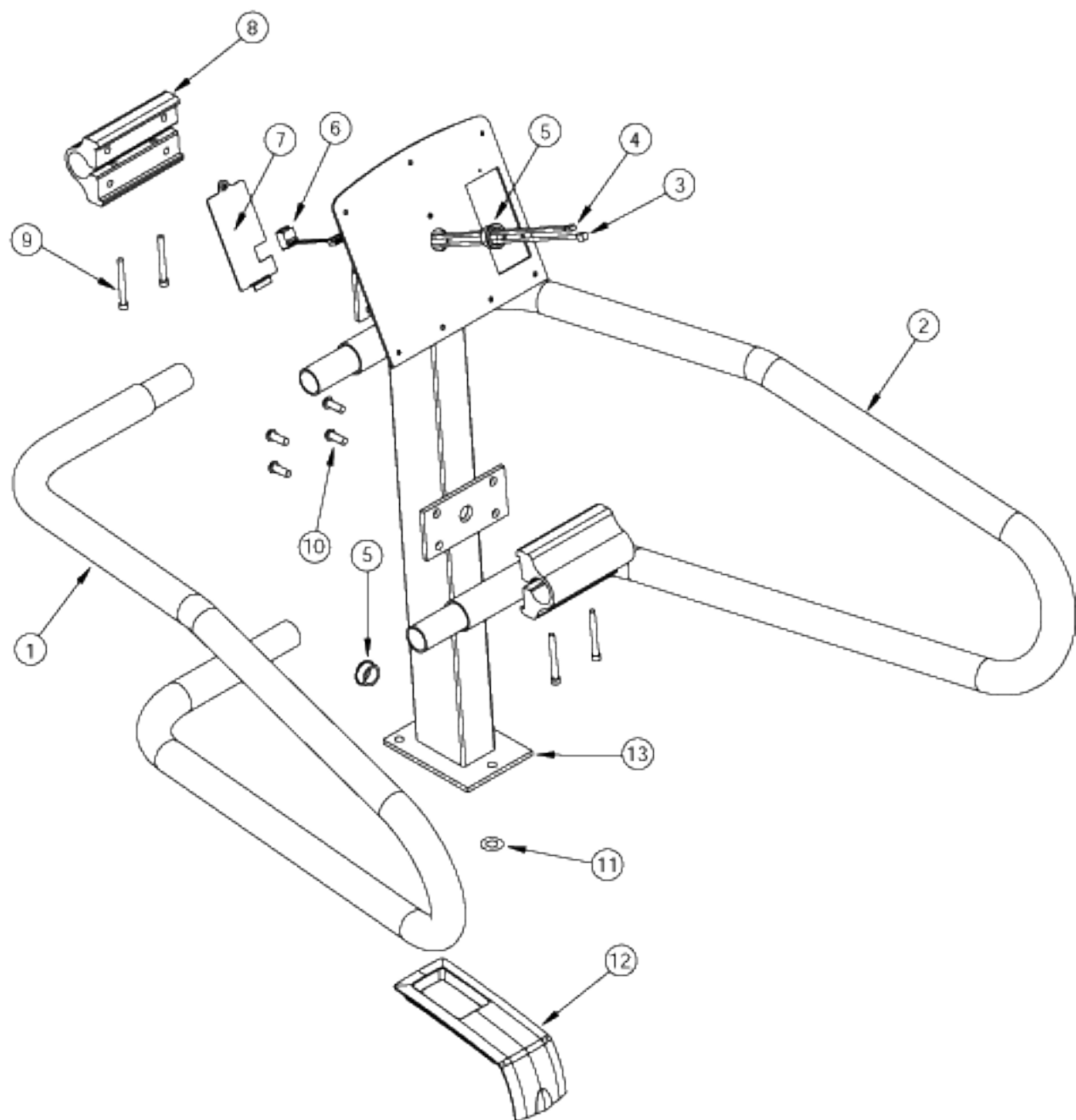


Crank Pulley

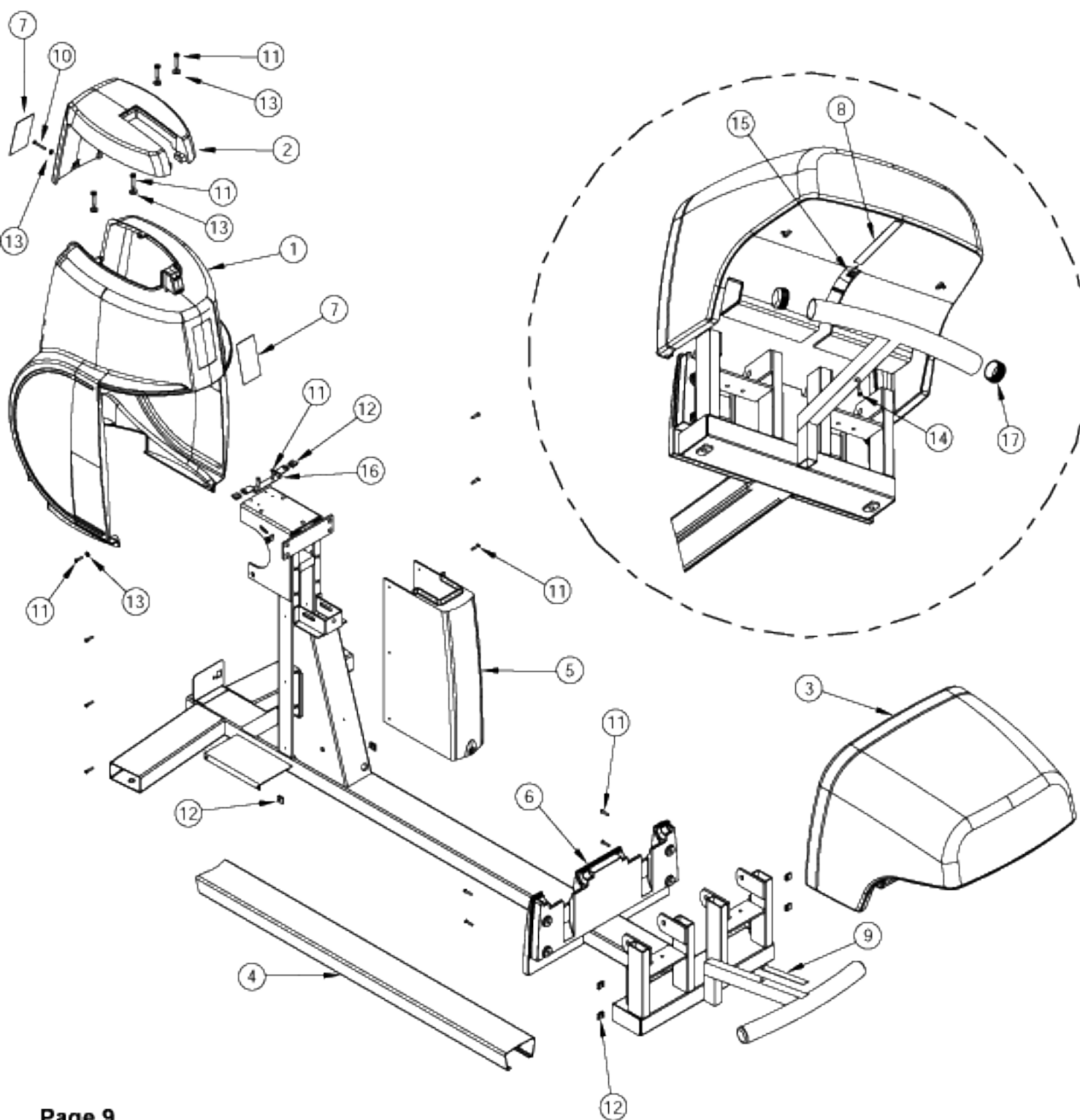
- ④ Complete Assy, 6"
- ⑤ Complete Assy, 5"

Handrail Assy

4600 Elliptical - No Heart Rate

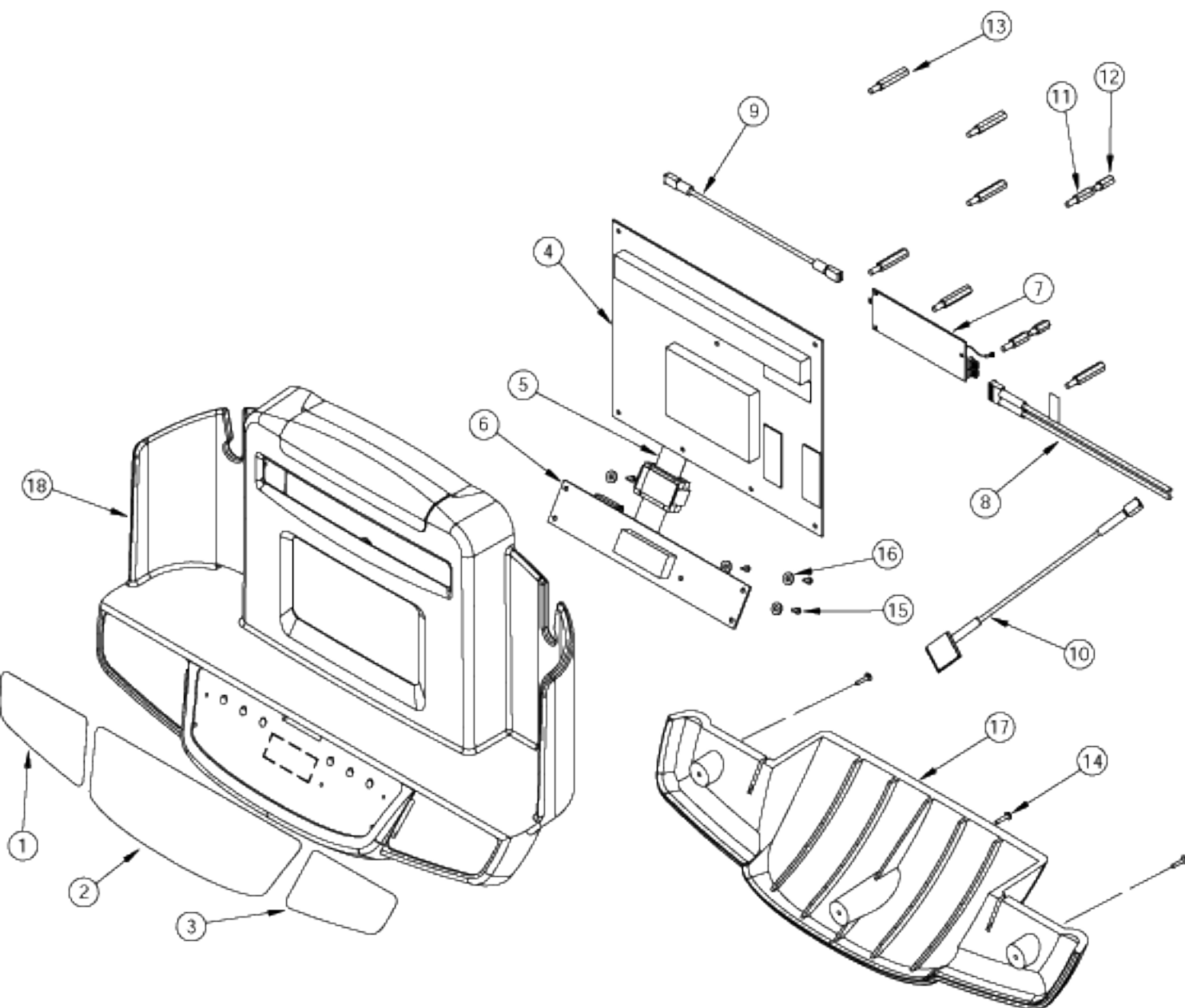


4600 Shroud Assy



Natural Runner Series

Display Assy



Warning!

Do not install, connect, swap, change or modify an Elliptical Edge, Natural Runner, Natural Runner Plus or Pro Bike LCB (Load Control Board) or Display Electronic board, without reading and understanding the **"Software Compatibility Chart"**.

It can be found by clicking the Technical Info tab and selecting Basic Troubleshooting, then choose the appropriate unit.

Severe damage may occur to the LCB and **WILL NOT** be covered under any warranty, including 90 day warranty.